

Single Leaf EI₂30 / T30 Fire Retardant Acoustic Door

| | | |
|---------------------------------|--|--------------------------------------|
| Fire Protection | EI₂30 / T30 | tested acc. to EN 1634-1 |
| Smoke Control (optional) | S_a, S₂₀₀ / RS | tested acc. to EN 1634-3 |
| Self-Closing (optional) | bis C5 | tested acc. to EN 1191 |
| Sound Insulation | R_{w,P} 40 dB | tested acc. to EN ISO 10140-2 |

Certified in accordance with DIN EN 16034 / 14351-1 / 13241

General Building Approval as T30-1 (-RS) -FSA acc. to DIN 4102-5 / DIN 18095

Optional Audited Additional Functions

| | | |
|------------------------------|------------------------|--------------------------------------|
| - Burglar Protection | RC2/RC3/RC4/RC5 | tested acc. to EN 1627 |
| - Bullet Resistance | FB4/FB6 | tested acc. to EN 1522 |
| - Air Tight | up to class 4 | tested acc. to EN 1026 |
| - Rain- and Fire-Water Tight | class 6A | tested acc. to EN 1027 |
| - Wind Load Resistance | up to class C5 | tested acc. to EN 12211 |
| - Blast Resistance | up to 20 kPa | tested acc. to EN 13124-1 |
| - Explosion Protection | up to zone 1/21 | acc. to EN 1127-1 or ATEX 2014/34/EU |
| - Stainless Steel | | |

Range of Dimension

Range of Dimension for Doors **Width** from 625 mm to 1500 mm
Height from 1750 mm to 3000 mm

Range of Dimension for Hatches **Width** from 500 mm to 750 mm
Height from 500 mm to 1750 mm

Technical Specification and Tender Text

| | |
|---|---|
| Product: | EI₂30 / T30 single leaf fire retardant acoustic door brand Buchele tested acc. to EN 1634-1 and EN ISO 10140-2 |
| Door Type: | PLANE Line PL 301 BASIC |
| Sound Insulation R_{w,P} | 40 dB |
| Structural Opening: | x mm |
| Door Leaf: | Double-walled, planar 70 mm thick steel door without hinge embossing, three sides rebated with thick rebate Without bottom stop. Special insulating inserts fully laid-in and glued. Securing pin screwed in door leaf rebate. Drop seal system. |
| Hinges: | Three-part, height adjustable construction hinges with hinge pin retention and ball bearing spacer ring for smooth door movement. |
| Door Closer: | Door closer system with standard arm acc. to EN 1154 silver coloured mounted on hinge side. |
| Fitting: | Mortise lock with latch lever function acc. to EN 12209 (prepared for installation of a profile cylinder lock, provided by customer). Door handle set in acc. to EN 1906 fixed pivoted synthetic material black in U-shape with rounded short-plate. |

Surface: Door leaf and frame galvanized und primed with 2K-PUR primer (Very High Solid) similar RAL 7035.

Installation:

| | |
|-------------------|----------|
| Masonry | ≥ 115 mm |
| Concrete | ≥ 100 mm |
| Areated Concrete | ≥ 200 mm |
| Mounting wall F60 | ≥ 125 mm |

Alternative: PLANE Line PL 301 PREMIUM with flush mounted optics

Frame: 3-sided circumferential rebated PLANE Line special corner frame for flush mounted optics on hinge side.
With visible, black coated intumescent material in rebate.
High-quality multi-chamber sealing profile adjustable fixed in the three-sided groove.

Hinges: Object hinges type VB-3D 160 adjustable in three dimensions.
Fixture element with slide bearings inside for smooth door movement.

Door Closer: Slide rail door closer system acc. to EN 1154 silver coloured mounted on hinge side.

Alternative: PLANE Line PL 301 SUPERIOR with flush mounted optics

Frame: 3-sided circumferential rebated PLANE Line special corner frame for flush mounted optics on hinge side.
With visible, black coated intumescent material in rebate.
High-quality multi-chamber sealing profile adjustable fixed in the three-sided groove.

Hinges: Concealed hinge system adjustable in three dimensions.

Door Closer: Concealed slide rail door closer system acc. to EN 1154 integrated in frame and door leaf.

Supplementary Equipment

Standard Glazing: F30 fire-protective glazing fixed with profiled and visible screwed steel glazing bars.
Minimum border 125 mm on side and top, base 300 mm.

Flush Glazing: PLANE Line F30 special glazing flush mounted with outer edge of door leaf on hinge side and opposite hinge side.

Edge enamelling and permanent elastic glazing joint in colour black RAL 9004.

Minimum border 125 mm on side and top, base 300 mm.

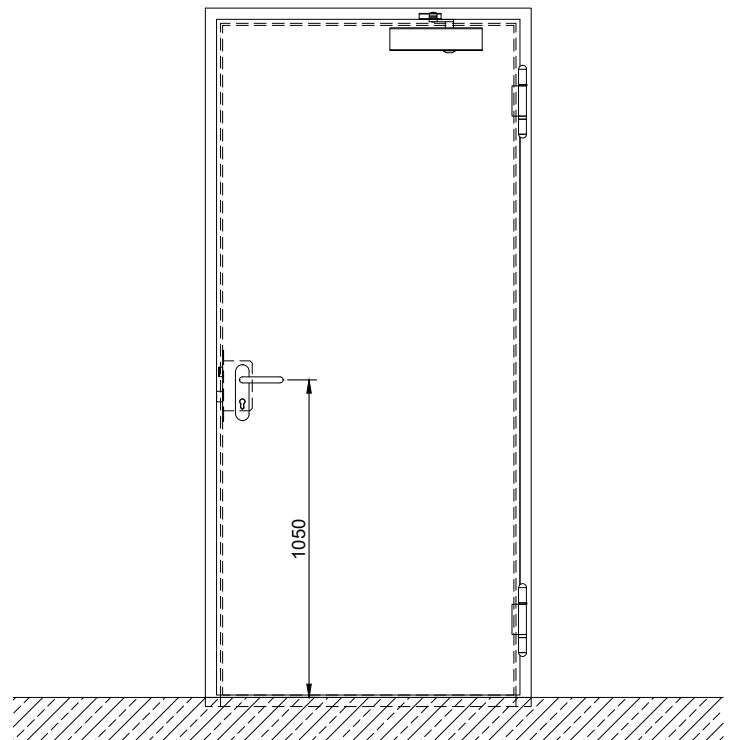
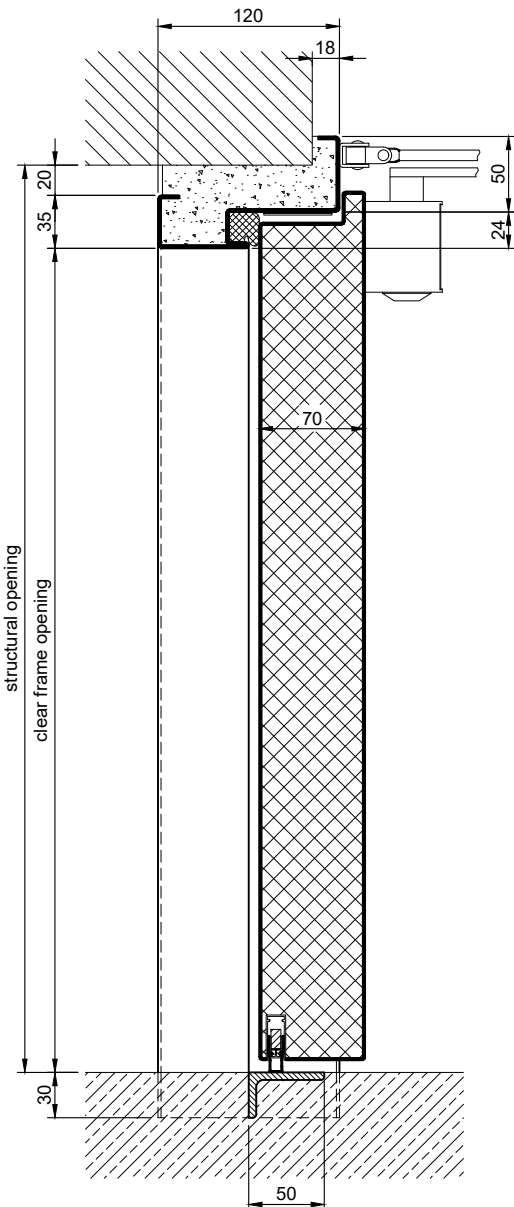
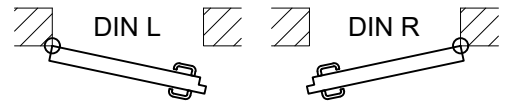
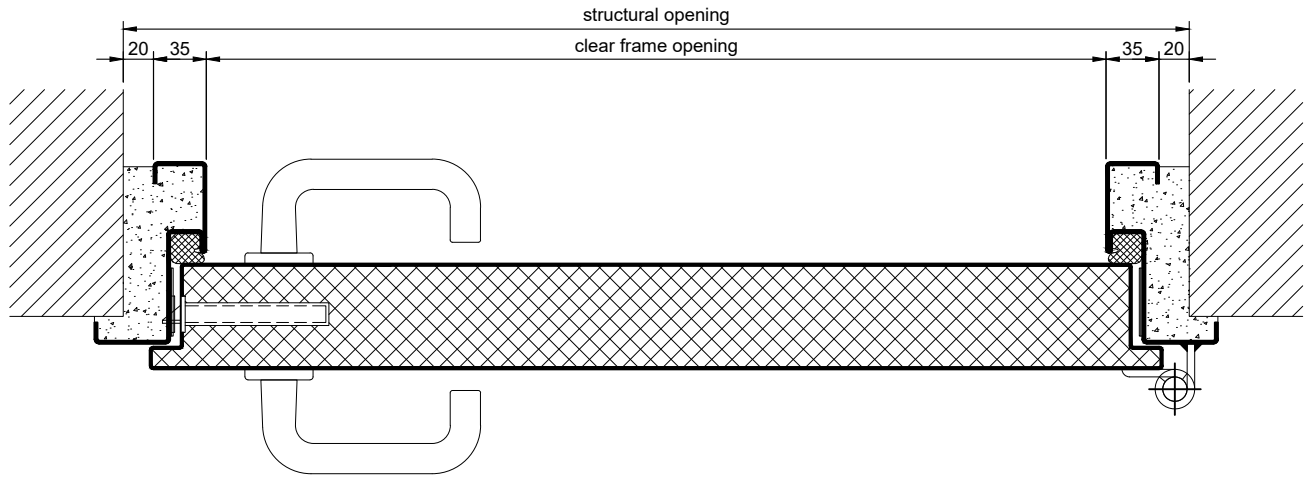
Stainless Steel:

Material 1.4301 (V2A) or 1.4404 (V4A),
Surface mill finish or brushed.

BUCHELE DELUXE:

The exclusive surface coating.

BASIC - Version

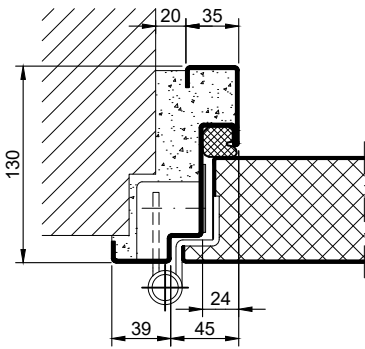


1.1.2. PLANE LINE PL 301 40 DB_EN

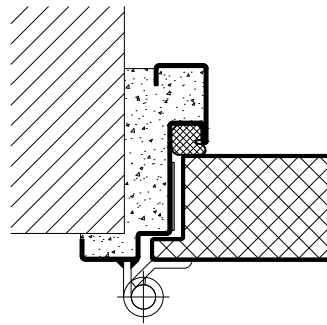
technical modifications reserved - edition 03/2024

PREMIUM - Version

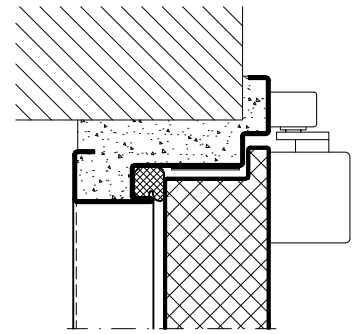
object hinges VB-3D



construction hinges

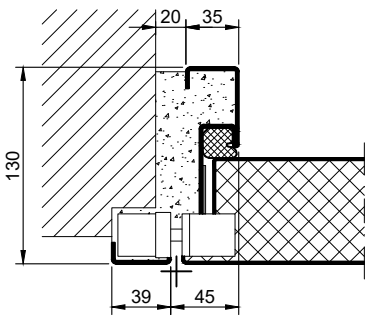


slide rail door closer

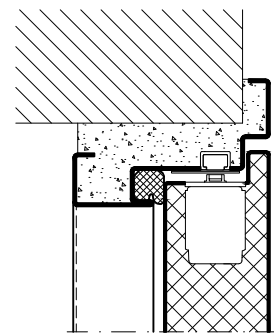


SUPERIOR - Version

concealed hinges

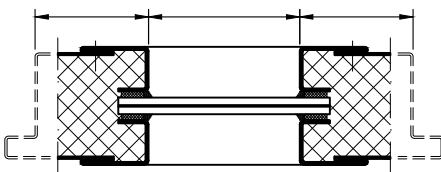


integrated door closer

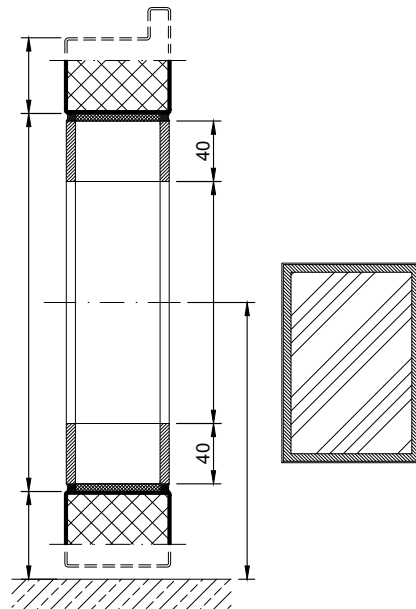
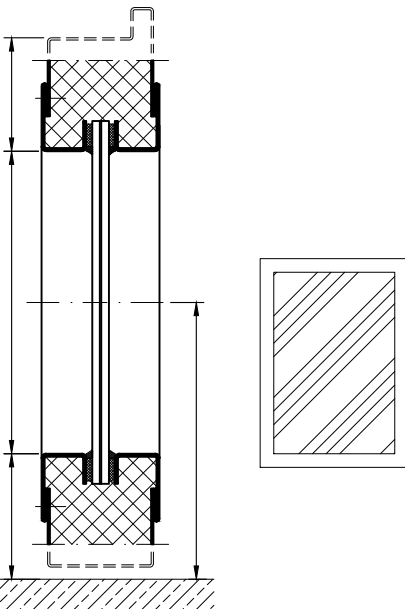
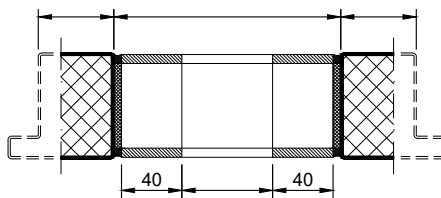


Options

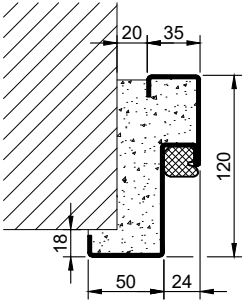
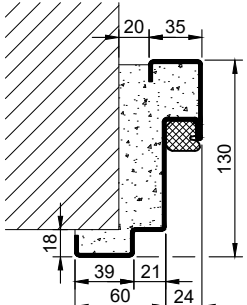
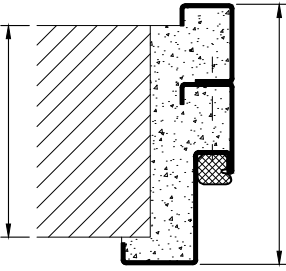
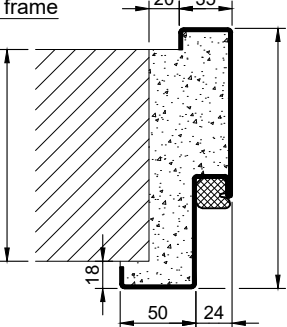
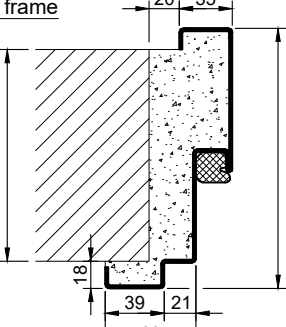
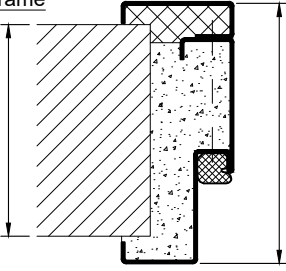
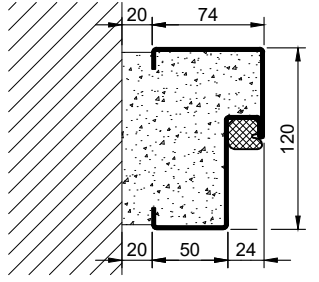
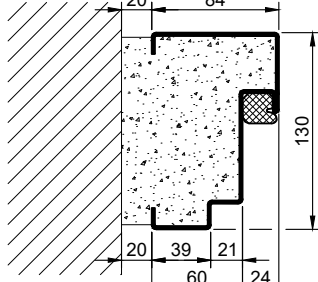
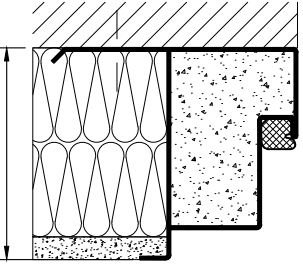
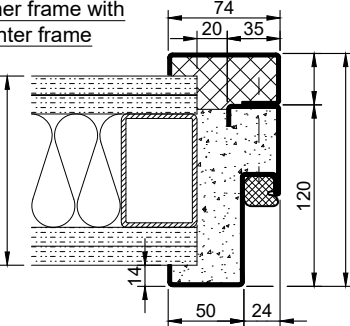
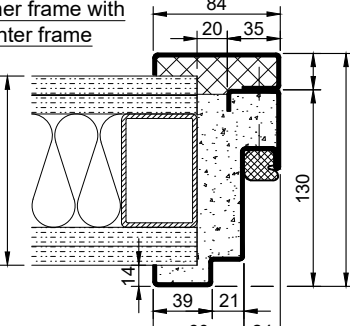
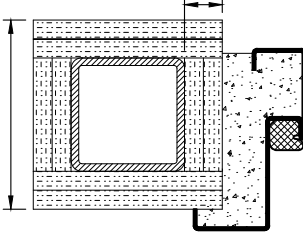
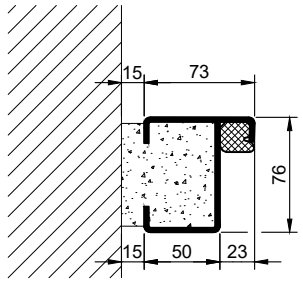
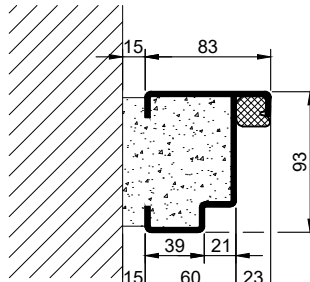
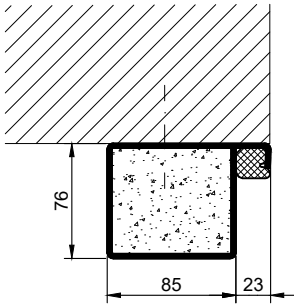
glazing



flush glazing



1.1.2. PLANE LINE PL 301 40 DB_EN

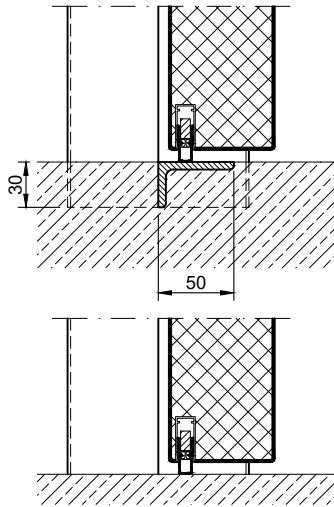
| Frames BASIC | Frames PREMIUM/SUPERIOR | Variants (illustration BASIC) |
|--|--|---|
| <p>corner frame</p>  | <p>corner frame</p>  | <p>corner frame with additional frame</p>  |
| <p>encasing frame</p>  | <p>encasing frame</p>  | <p>encasing frame with counter frame</p>  |
| <p>block frame</p>  | <p>block frame</p>  | <p>juttet block frame</p>  |
| <p>corner frame with counter frame</p>  | <p>corner frame with counter frame</p>  | <p>corner frame at support / pillar</p>  |
| <p>profile block frame</p>  | <p>profile block frame</p>  | <p>pre-wall frame</p>  |

1.1.2. PLANE LINE PL 301 40 DB_EN

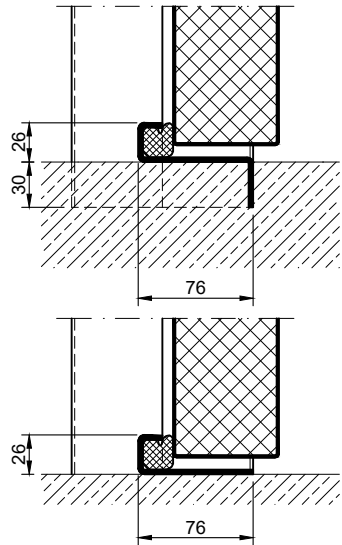
technical modifications reserved - edition 03/2024

Thresholds

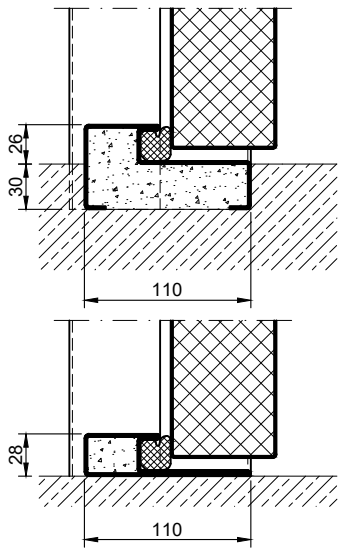
drop seal



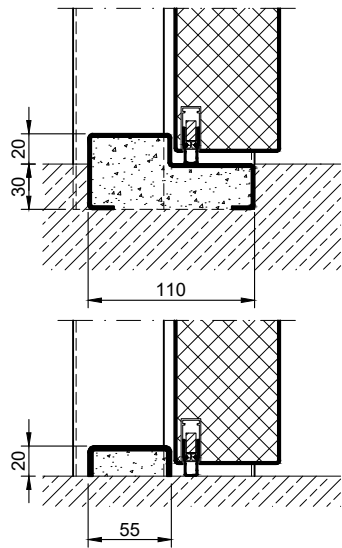
stop sill with seal



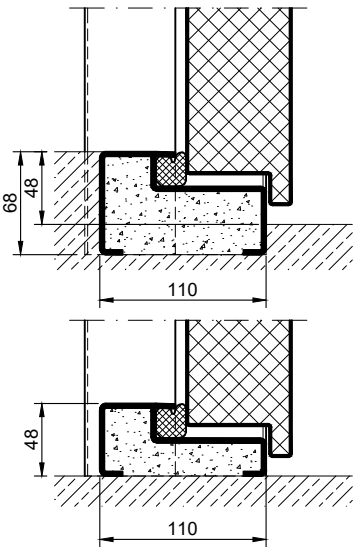
stop sill with seal



stop sill with drop seal



full sill



1.1.2_PLANE LINE PL 301 40 DB_EN